

Project: MTA Arts for Transit Fort Hamilton Station, D Line in Brooklyn, NY Artist - Portia Munson



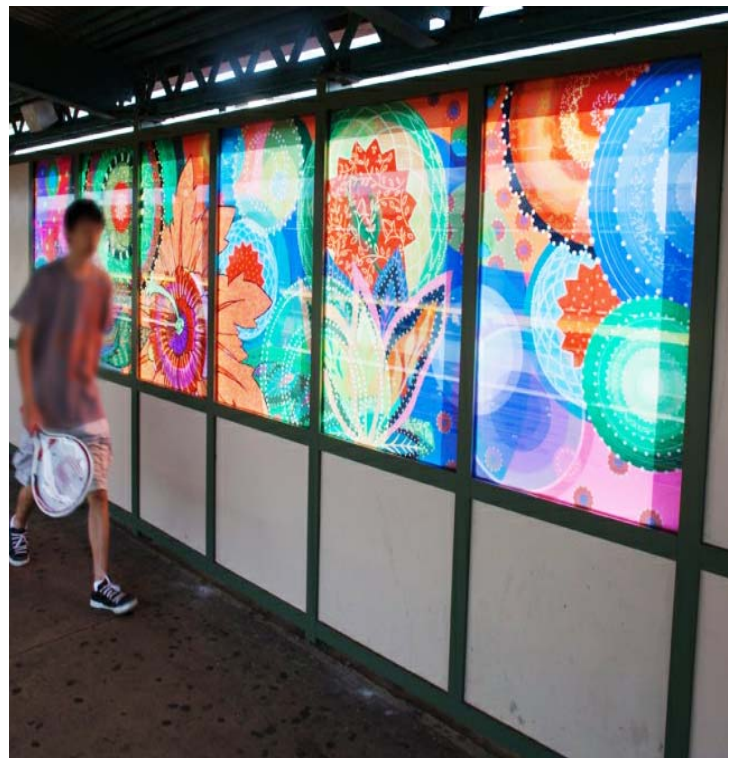
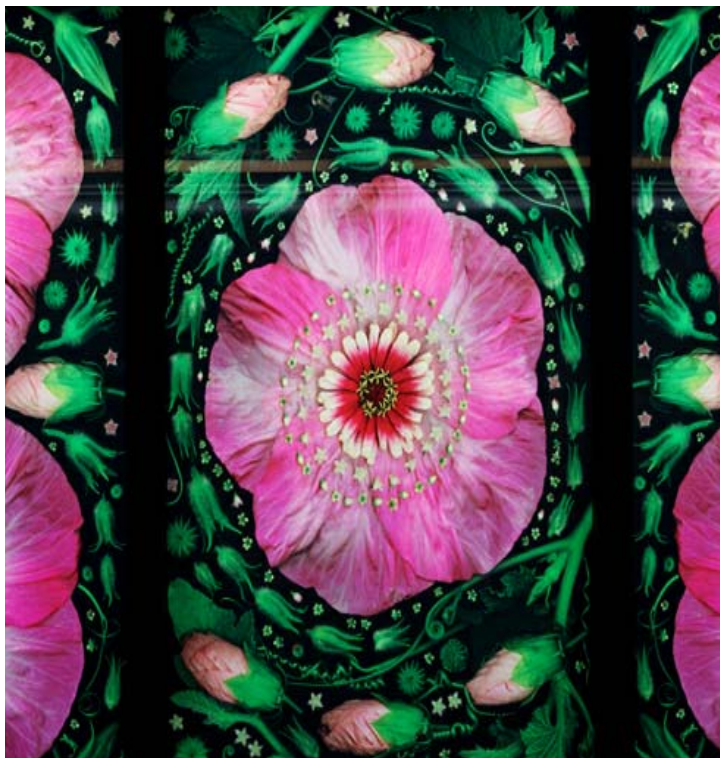
Artist Portia Munson created "Gardens of Fort Hamilton Parkway Station", 6 sets of lush laminated glass gardens located at the Fort Hamilton station on the D Line.
This station required Montage Graphix to produce 30 individual 30 inch x 47.5 inch Insert Films.



Montage Graphix

Unit C2 (Office) + C3 (Production), 20-28 Carrington Road, Marrickville, NSW Australia, 2204
Phone: +612 9559 5500 Email: info@montagegraphix.com.au

**Project: MTA Arts for Transit
Fort Hamilton Station, D Line in Brooklyn, NY
Artist - Portia Munson**



Montage Graphix

Unit C2 (Office) + C3 (Production), 20-28 Carrington Road, Marrickville, NSW Australia, 2204
Phone: +612 9559 5500 Email: info@montagegraphix.com.au

Project: MTA Arts for Transit
Fort Hamilton Station, D Line in Brooklyn, NY
Artist - Portia Munson



Montage Graphix

Unit C2 (Office) + C3 (Production), 20-28 Carrington Road, Marrickville, NSW Australia, 2204
Phone: +612 9559 5500 Email: info@montagegraphix.com.au

Project: MTA Arts for Transit 25th Avenue Subway Station in Brooklyn, NY Artist - Amy Cheng



MONTAGE GRAPHIX

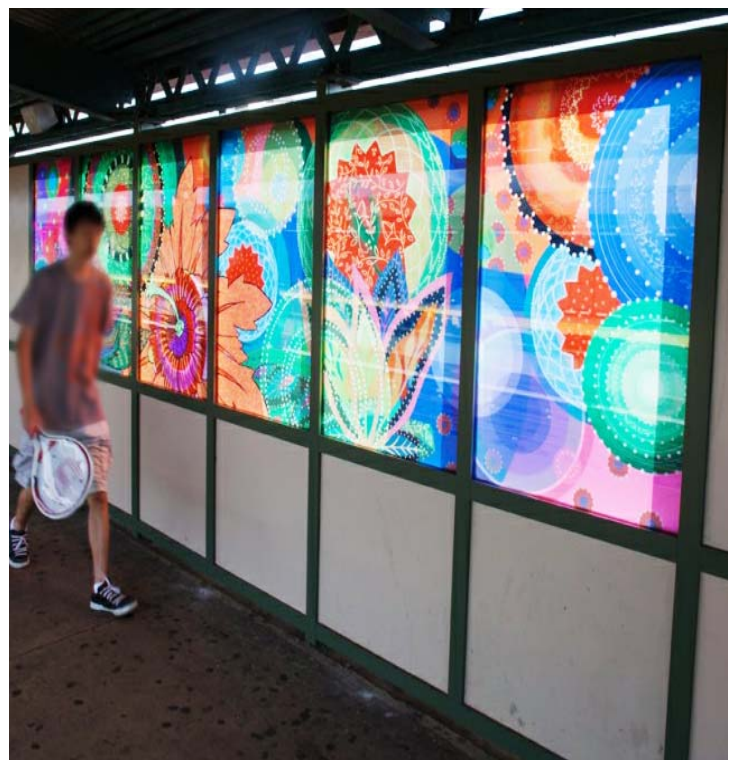
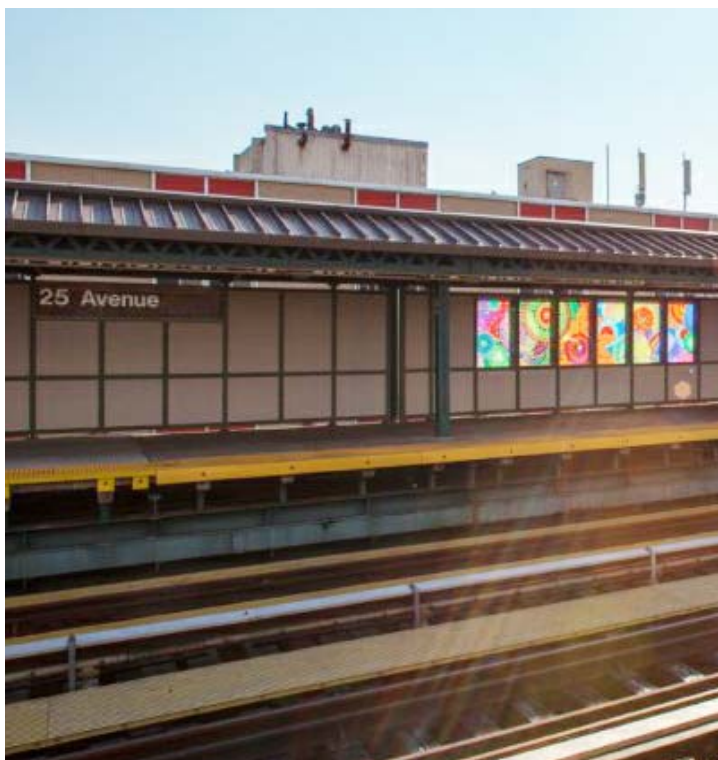
"Rediscovery" by artist Amy Cheng consists of four sets of laminated glass panels each measuring 4-ft by 15-ft. Installed on the above ground platform of the 25th Avenue Subway Station, "Rediscovery" metaphorically depicts cosmic, imaginative scenes that speaks to the largeness of life, and the intricacy and mystery of the world. This Station required Montage Graphix to produce 24 x 30 inch x 40 inch Insert Films.



Montage Graphix

Unit C2 (Office) + C3 (Production), 20-28 Carrington Road, Marrickville, NSW Australia, 2204
Phone: +612 9559 5500 Email: info@montagegraphix.com.au

**Project: MTA Arts for Transit
25th Avenue Subway Station in Brooklyn, NY
Artist - Amy Cheng**



Montage Graphix

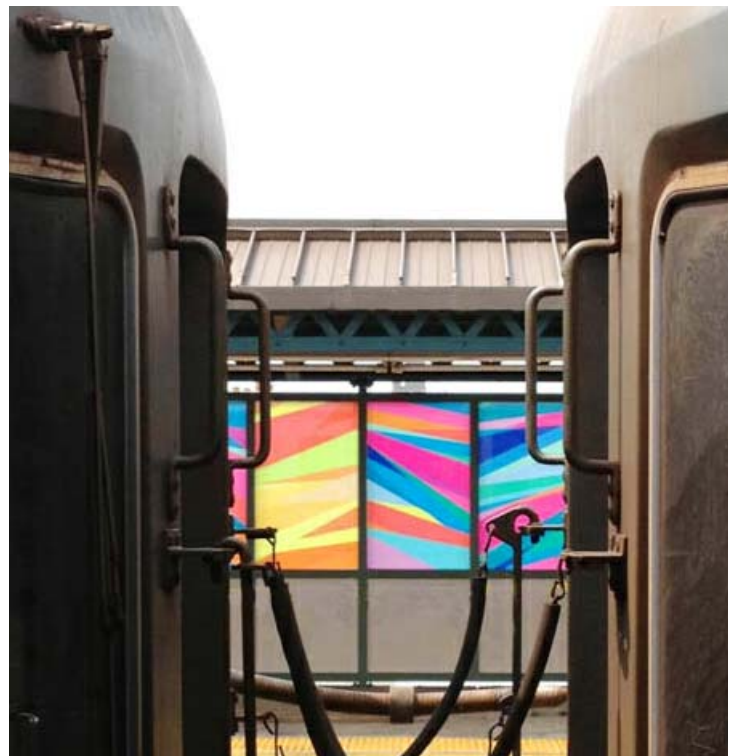
Unit C2 (Office) + C3 (Production), 20-28 Carrington Road, Marrickville, NSW Australia, 2204
Phone: +612 9559 5500 Email: info@montagegraphix.com.au

Project: MTA Arts for Transit
20th Avenue Station, D-Line in Brooklyn, NY
Artist - Odili Donald Odita



MONTAGE GRAPHIX

"Kaleidoscope" by artist Odili Donald Odita at the 20th Avenue Station is a laminated glass mural consisting of 40 individual windows. It features exuberant colors reminiscent of a symbolic cultural quilt of the surrounding neighbourhood. This station required Montage Graphix to produce 40 individual 30 inch x 48 inch Insert Films.



Montage Graphix

Unit C2 (Office) + C3 (Production), 20-28 Carrington Road, Marrickville, NSW Australia, 2204
Phone: +612 9559 5500 Email: info@montagegraphix.com.au

Project: MTA Arts for Transit
20th Avenue Station, D-Line in Brooklyn, NY
Artist - Odili Donald Odita



Montage Graphix

Unit C2 (Office) + C3 (Production), 20-28 Carrington Road, Marrickville, NSW Australia, 2204
Phone: +612 9559 5500 Email: info@montagegraphix.com.au

Project: MTA Arts for Transit

79th Street Station, D-Line in Brooklyn, NY

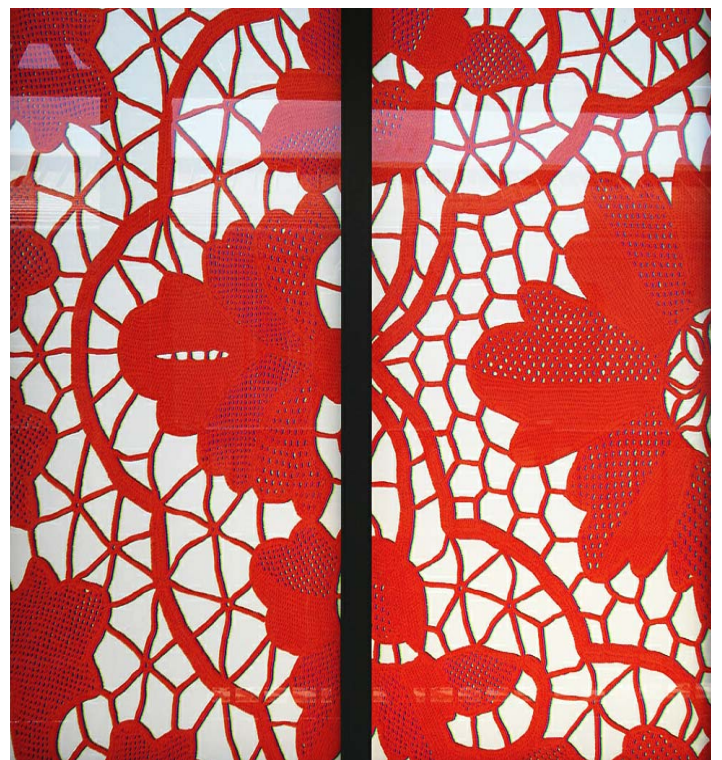
Artist - Susanna Starr



MONTAGE GRAPHIX

“A Continuous Thread” by artist Susanna Starr is inspired by the lace doilies that have a particular significance to the predominantly Italian-American community in the neighborhood. The double layered images shift and change as seen from different angles from the platforms and the street level.

The 79th Street Station required Montage Graphix to produce 48 individual 30 inch x 48 inch Insert films.



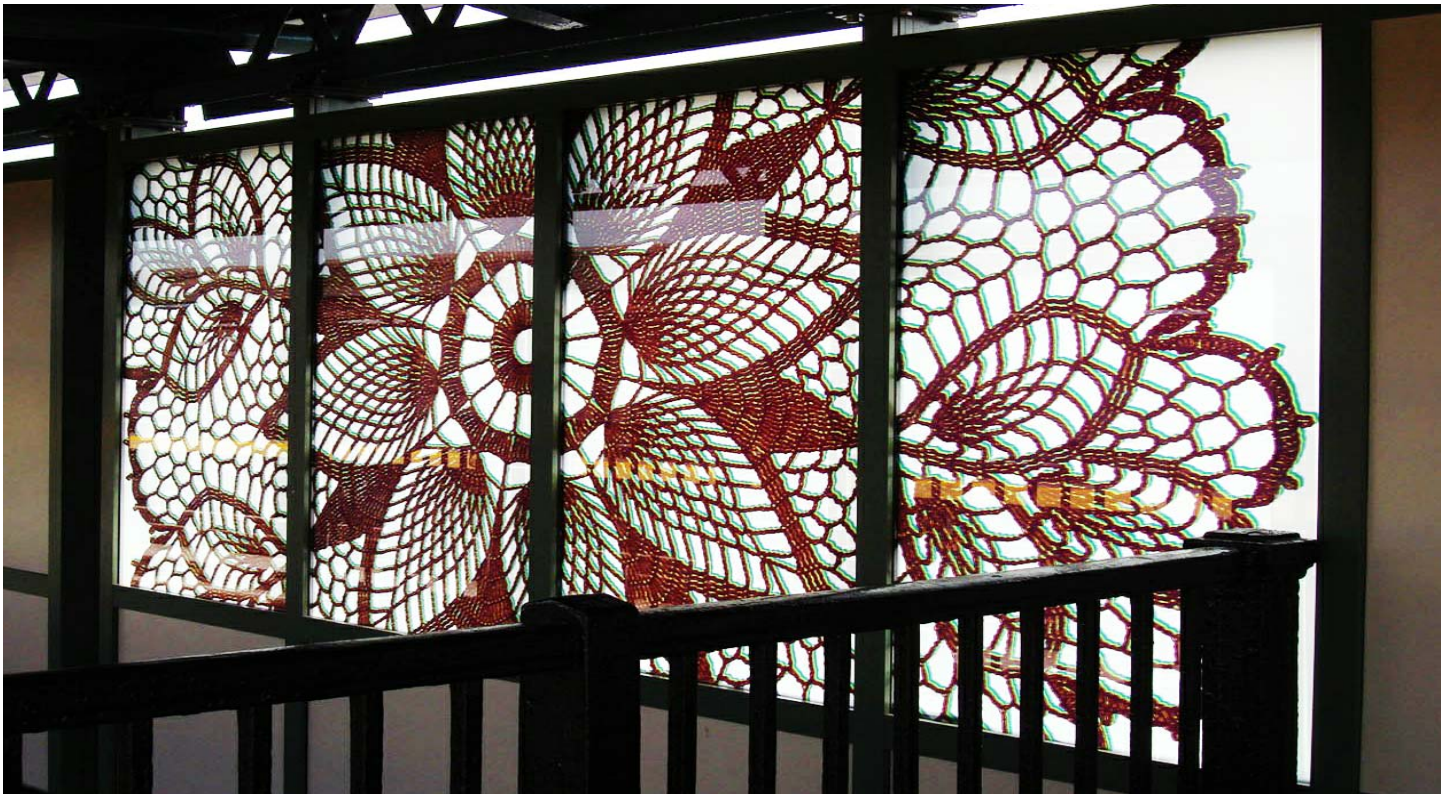
Montage Graphix

Unit C2 (Office) + C3 (Production), 20-28 Carrington Road, Marrickville, NSW Australia, 2204

Phone: +612 9559 5500

Email: info@montagegraphix.com.au

Project: MTA Arts for Transit
79th Street Station, D-Line in Brooklyn, NY
Artist - Susanna Starr



Montage Graphix

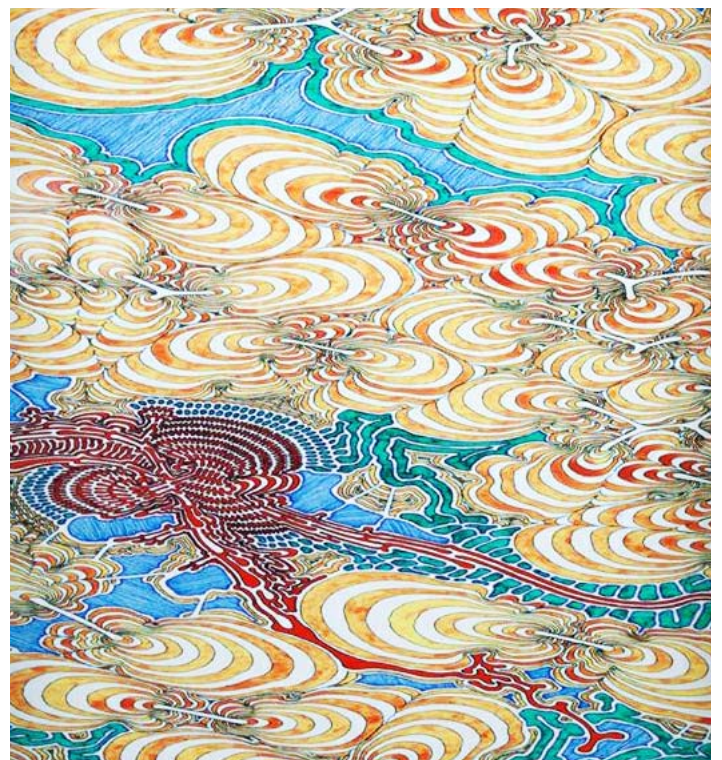
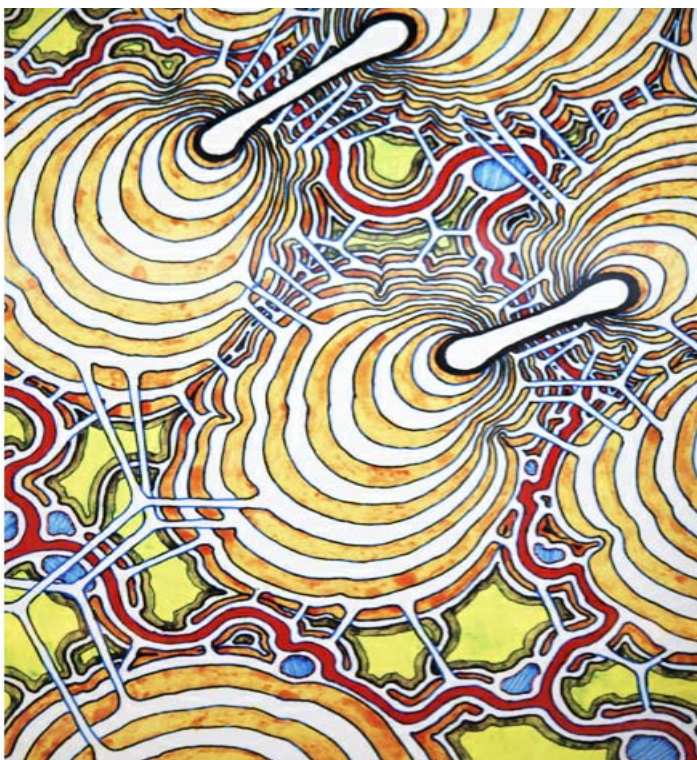
Unit C2 (Office) + C3 (Production), 20-28 Carrington Road, Marrickville, NSW Australia, 2204
Phone: +612 9559 5500 Email: info@montagegraphix.com.au

Project: MTA Arts for Transit Bay 50th Street Station, D-Line in Brooklyn, NY Artist - Dan Zeller



MONTAGE GRAPHIX

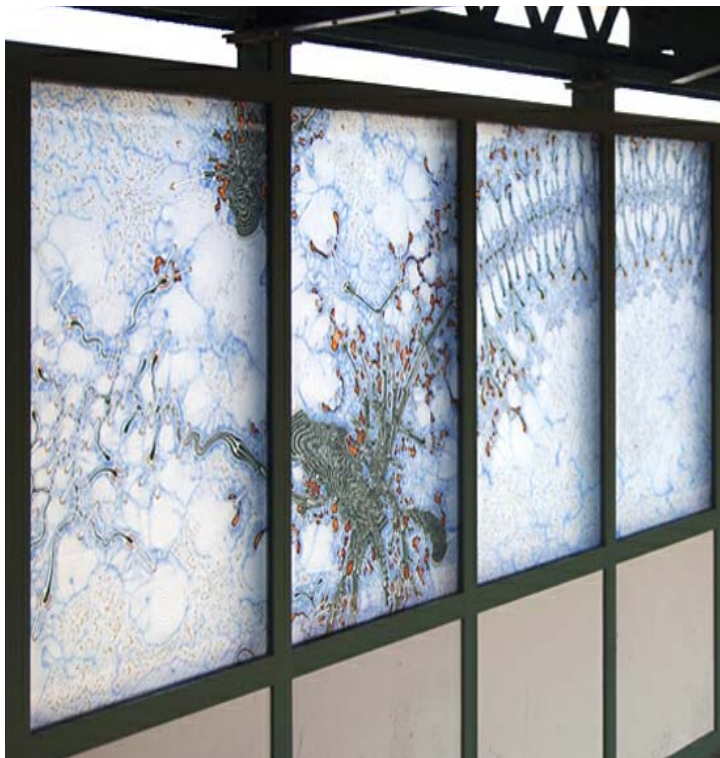
At the 50th Street Station, artist Dan Zeller mounted "Internal Connectivity, 2012". This station provides a natural setting for Zeller's abstract drawings to address the connectiveness of lives in an urban environment. Zeller studied satellite imagery and biological systems along the West End Line and interpreted them into abstract patterns. This station required Montage Graphix to produce 40 x 30 inch x 48 inch Insert Films.



Montage Graphix

Unit C2 (Office) + C3 (Production), 20-28 Carrington Road, Marrickville, NSW Australia, 2204
Phone: +612 9559 5500 Email: info@montagegraphix.com.au

Project: MTA Arts for Transit
Bay 50th Street Station, D-Line in Brooklyn, NY
Artist - Dan Zeller



Montage Graphix

Unit C2 (Office) + C3 (Production), 20-28 Carrington Road, Marrickville, NSW Australia, 2204
Phone: +612 9559 5500 Email: info@montagegraphix.com.au