

Project: The Strand Arcade Opening Mid-2014



MONTAGE GRAPHIX

Located in the heart of Melbourne's fashion district, the Strand Arcade was re-developed in 2013. Studio 505 designed a striking new façade for the building featuring 133 colourful glass fins. Appearing near translucent during the day, the fins light up in a burst of colour during evening hours.

Montage Graphix supplied 365 films to complete the Strand's unique design.



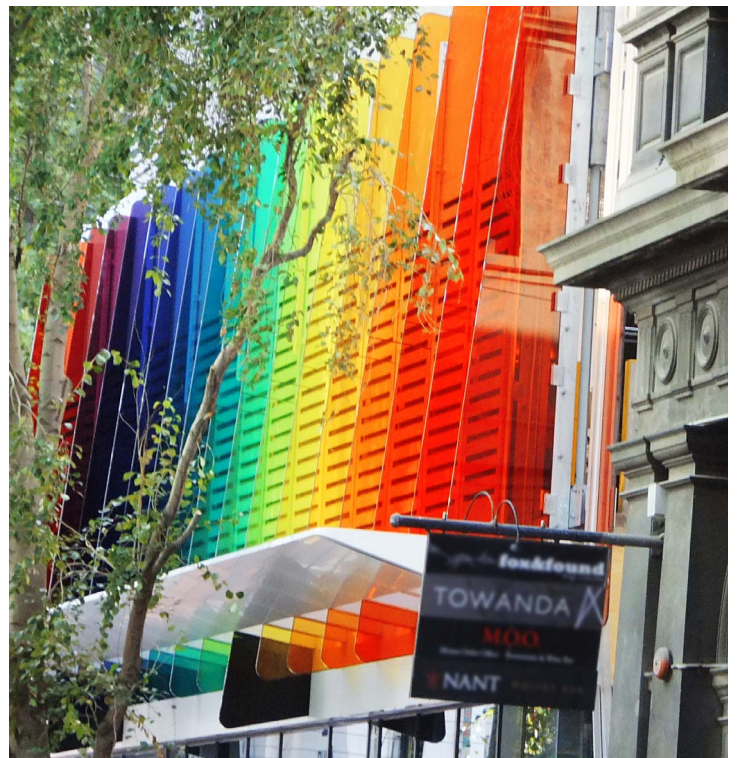
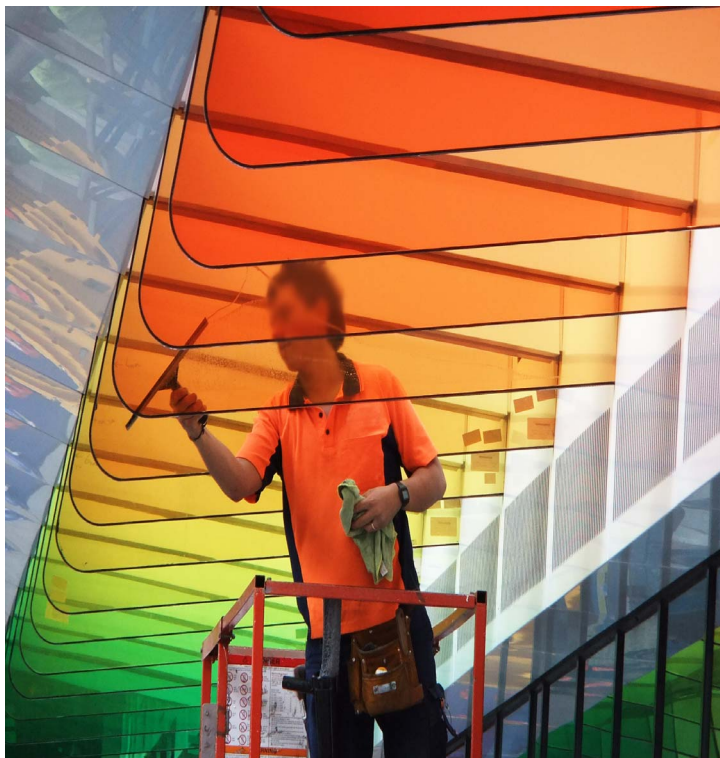
Montage Graphix

Unit C2 (Office) + C3 (Production), 20-28 Carrington Road, Marrickville, NSW Australia, 2204

Phone: +612 9559 5500

Email: info@montagegraphix.com.au

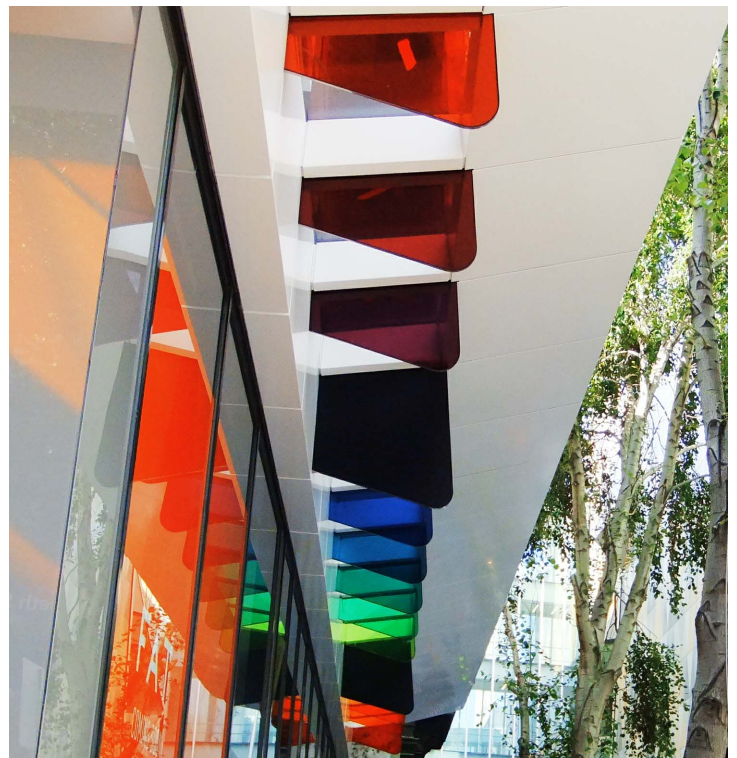
Project: The Strand Arcade Opening Mid-2014



Montage Graphix

Unit C2 (Office) + C3 (Production), 20-28 Carrington Road, Marrickville, NSW Australia, 2204
Phone: +612 9559 5500 Email: info@montagegraphix.com.au

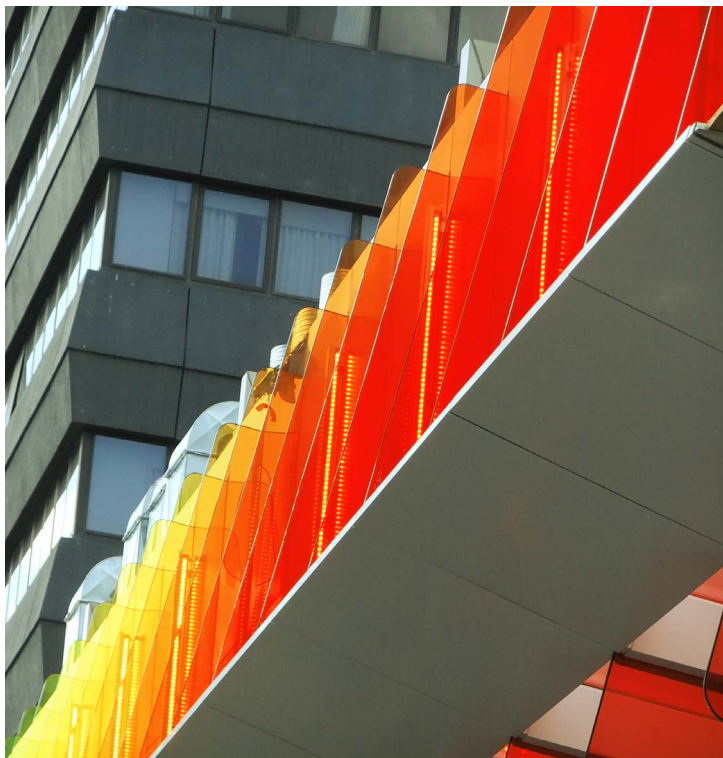
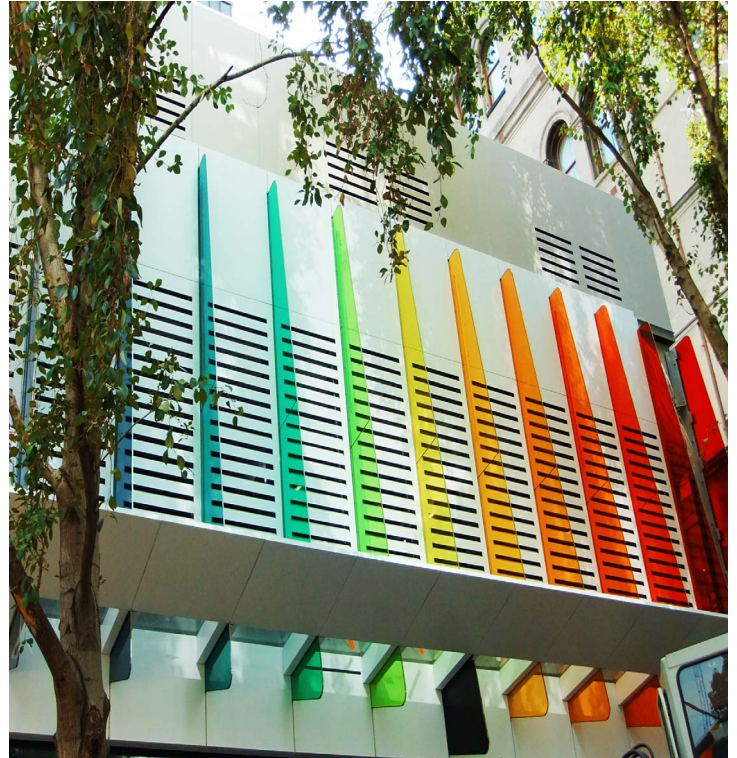
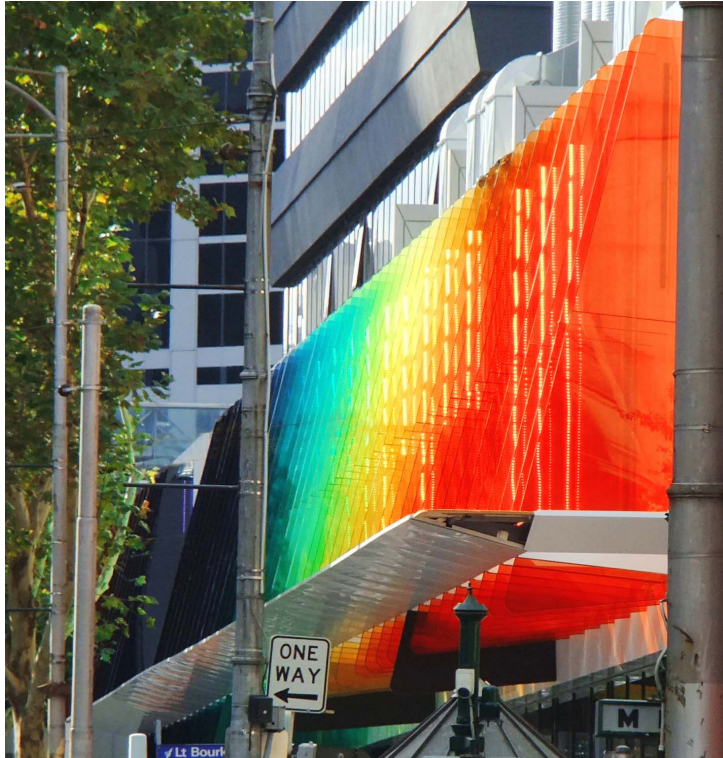
Project: The Strand Arcade Opening Mid-2014



Montage Graphix

Unit C2 (Office) + C3 (Production), 20-28 Carrington Road, Marrickville, NSW Australia, 2204
Phone: +612 9559 5500 Email: info@montagegraphix.com.au

Project: The Strand Arcade Opening Mid-2014



Montage Graphix

Unit C2 (Office) + C3 (Production), 20-28 Carrington Road, Marrickville, NSW Australia, 2204
Phone: +612 9559 5500 Email: info@montagegraphix.com.au